



2017 Annual Report

VISION

To provide a progressive, creative, forward thinking environment, rich in opportunities for infants, young children, adults, expectant mothers and families to reach their full potential.

MISSION

To provide structure and guidance, joy and meaning for individuals and families through evidence based practices, art, education and other creative approaches.

"Leadership is not about a title or a designation. It's about impact, influence and inspiration. Impact involves getting results, influence is about spreading the passion you have for your work, and you have to inspire teammates and customers." Robin S. Sharma

It is a privilege to serve as Board Chair with individuals who daily impact, influence and inspire those who they serve.

The Enola Group operates Signature Day Program, Signature Living and Early Head Start. These programs undergo strict state and national scrutiny through various accreditations and I will highlight these below. Although extremely proud of the recognitions the board has received for these programs I cannot express my gratitude, my appreciation and my admiration to the staff and employees of these programs. Our responsibility as a board is to make sure that lives are touched, lives are changed and that each day our programs bring joy and meaningful experiences to those who enter into our facilities' doors. With great confidence I am assured that this is taking place in our programs each and every day.

"The organization is strengths-based and transparent. They hold all staff, management and Board members to the highest ethical standards. The organization has earned the public trust and is recognized and respected in the community it serves. 100% of Community Stakeholders report the openness and transparency of the organization, and their visibility and partnerships in the community. This is a very well-respected organization." Quoted by COA reviewers in August 2017 when Adult Services (Signature Day and Signature Living) was awarded 4 years of national accreditation from the Council on Accreditation. We demonstrated full compliance and implementation on all reviewed standards, allowing expedited accreditation, an achievement reserved for only 38% of COA-Accredited organizations worldwide

The Enola Group expanded from Early Head Start to Child and Family Services which includes the Early Head Start Program and the Early Learning Centers in all counties. The child care service now includes services for children up to age 5 years. 2018 saw a Private Day Care expansion integrated in to the programming. Early Head Start operates in Alexander, Burke and Caldwell counties, all three centers maintain a 5-star license.

Wendy Cato, Board Chair



Board of Directors

Officers:

Wendy Cato
Board Chair

Kathy S. Smith
Vice-Chair

Marty Sohovich
Secretary Treasurer

Members:

Kristin Steiner

Jerry Haynie

Mandy White

Meghan Welty

Joanne Blough

Rhonda Hamby

Jared Amos

Administration
506 E. Union St.
Morganton 28655
828.604.4906

Adult Services
504-A E. Union St.
Morganton 28655
828.433.0056

Burke EHS
501 E. Concord St.
Morganton 28655
828.475.0107

Alexander EHS
401 E. Main St.
Taylorsville 28681
828.635.1479

Caldwell EHS
609 Harper Ave.
Lenoir 28645
828.757.8632



Child and Family Services Early Head Start Program and Early Learning Centers

The Child and Family services includes the Early Head Start Program and Early Learning Centers. The services are comprehensive, community-based, and available to children birth to age five and their families and woman who are pregnant. We provide early childhood education and family support in families homes and in center-based early childhood settings to eligible families living in Alexander, Burke and Caldwell Counties.

The **Early Head Start Program's** funded enrollment is 200 children and families. In the 2016-2017 program year, the program served a cumulative number of 301 children and 46 women who were pregnant.



Some Program Highlights

- Provided 43 newborn screenings
- Engaged 40% of fathers/male caregivers in child learning activities
- Served a cumulative count of 3,037 children/families in groups
- Partnered with Second Harvest Food Bank to provide Cooking Matters cooking classes in Alexander, Burke and Caldwell counties
- Multiple staff presented at local and state level conferences and training events
- Served 48 children with developmental delays or identified disabilities
- Facility and playground improvements made in all 3 counties

"Staff are always willing to go above and beyond."
-Parent



Family Services (services and number of families)

Emergency/crisis intervention	62	Domestic violence services	10
Housing assistance	29	Child support assistance	7
Mental health services	27	Health Education	229
English as a Second Language training	31	Assistance to families of incarcerated individuals	2
Adult education	38	Parent Education	237
Job training	18	Relationship/marriage education	6
Substance abuse prevention	11	Asset-building services	56
Substance abuse treatment	8		
Child abuse and neglect services	10		

Family Survey - 99% of family indicated being "almost always" or "always" satisfied with services.

School Readiness - Percentage of Children Meeting or Exceeding Developmental Expectations

Social Emotional	96%	Cognitive	97%
Physical Development	97%	Literacy	92%
Language	91%		

Medical and Dental Supports For Children enrolled

- 297 (98.6%) received continuous, accessible health care
- 289 (96%) had Medicaid, private or other health insurance
- 179 (100%) of 1 year old and older had oral health exams

Family Survey - 94% of families reported that they "almost always" or "always" provide and encourage their children to participate in school readiness and everyday learning opportunities.



SAINT PATRICK'S DAY

ADULT SERVICES

signature DAY

signature LIVING

504-A East Union
Morganton, NC

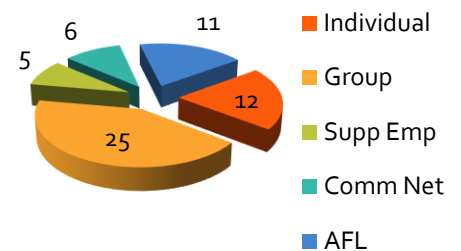
SERVICES AT A GLANCE

Signature Day Program continues to provide innovative and creative service approaches that support achievement of personal outcomes via clay, painting, fiber art, music, dancing, computers, cooking, and other craft works. We continue our partnership with Western Piedmont Community College for the provision of Life Skills / College and Career Readiness Classes. A professional member of West Union Art Studios allows us to sell our art work and enjoy employment as Gallery Assistants. In 2017, Signature Day Program participants earned \$4062.32 collectively in sales through West Union Art Studios.

During 2017, Signature Day Program provided 14,940 annual service hours to 29 adults, 431 of which were Supported Employment. An additional 927 hours of Community Networking allow people the opportunity to volunteer in such locations as Habitat ReStore, New 2 You Thrift Store, Soup Kitchen, Options, and participate in structured exercise classes offered through Phifer Wellness Center. Other Group & Individual services afford people the opportunity to participate in day trips designed to enhance their daily experience.

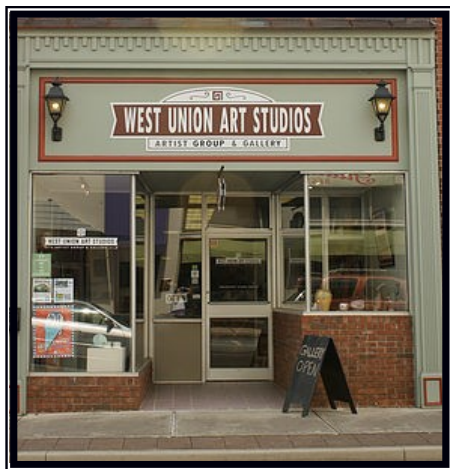
Signature Living Program continues to support 11 people living in Alternative Family Living (AFL) homes in Burke County. AFL services assist people to acquire, improve, and retain skills in self-help, general household management, and meal preparation. At the close of 2017, Signature Living program provided 3758 annual days of service and an additional 128 hours of Respite.

In these homes, people enjoy the benefit of "real life in the real world" experiences and take pleasure in active involvement in their neighborhoods, communities, and beyond: attending church, going out to eat, shopping, viewing performances at CoMMA, downtown Morganton TGIF concert series, and the annual Red White & Bluegrass Festival. AFL families continue their annual tradition of active vacationing, enjoying trips to Pigeon Forge, various beaches, Virginia, South Carolina, boating trips on Lake James, the Atlanta aquarium, Lake Lure, airplane shows, and camping excursions. AFL homes provide stability and active family life for the people we support.



Handmade Plant Markers for sale at WUAS

In August 2017, Adult Services was awarded 4-years of expedited accreditation through The Council on Accreditation due to demonstration of full or substantial implementation of all accreditation standards!

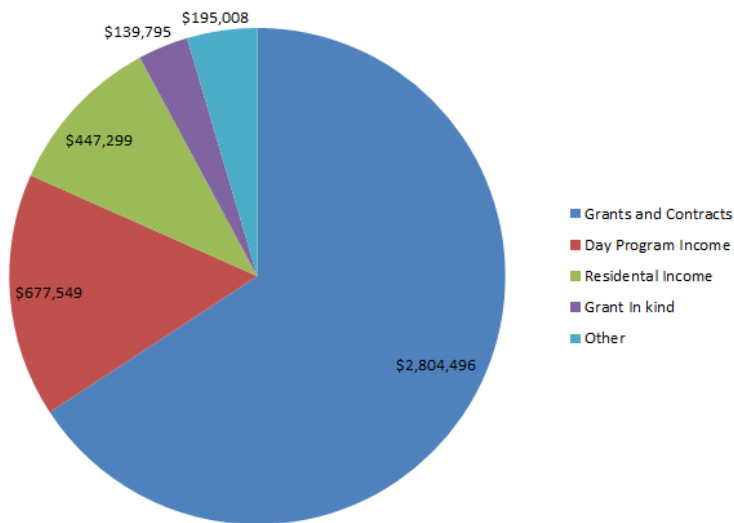


West Union Art Studios

Since 2015 The Enola Group Signature Artists have been members of West Union Art Studios. We continue to enjoy and benefit from the opportunity to participate in this vibrant and dynamic studio/gallery environment in downtown Morganton.

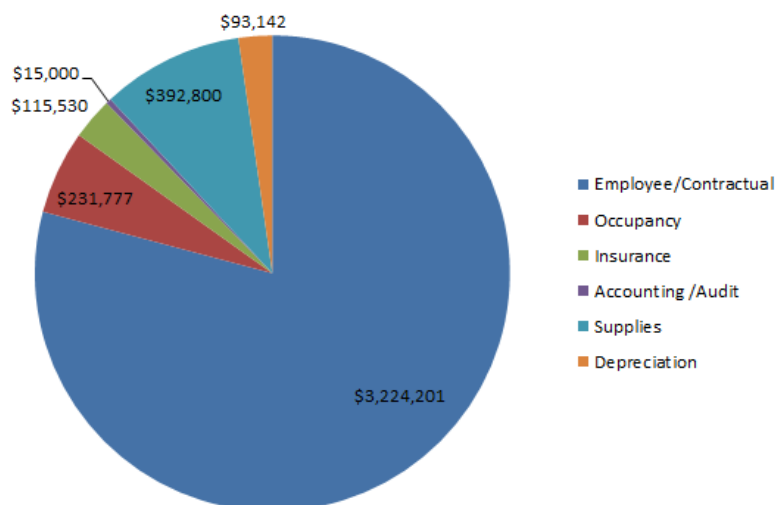
<http://www.westunionartstudiosllc.com/>
<https://www.facebook.com/Westunionartstudiosllc/>

2017 Revenue Sources



Each year employees, contractors, persons served, families, and guardians have the opportunity to anonymously rate their satisfaction with The Enola Group. Overall satisfaction remains at 97%. Additionally, the Enola Group employee retention rate has also remained at over 95% - critical in maintaining service quality and continuity.

2017 Total Expenses



ADMINISTRATION

Louis Pugh
 Executive Director
louis@enolagroup.org

Pam Hollar
 Finance Director
pam@enolagroup.org

Karin McDaniel
 Adult Service Director
kmcdaniel@enolagroup.org

Linda Wilson
 Child and Family Services Director
linda.wilson@enolagroup.org

www.EnolaGroup.org

THE ENOLA GROUP P.O. BOX 250 MORGANTON, NC 28680-0250